



— Est. 1944 —

BREMERTON COMMUNITY THEATRE

presents

MAMMA MIA!



Directed by

Trina Williamson

in the Robert Montgomery Auditorium

April 3 through May 3, 2026

Fridays & Saturdays at 7:30PM | Sundays at 2:30PM

BOXOFFICE@BCTSHOWS.COM · WWW.BCTSHOWS.COM

BREMERTON COMMUNITY THEATRE
PRESENTS

MAMMA MIA!

MUSIC & LYRICS BY

BENNY ANDERSSON

BJÖRN ULVAEUS

AND SOME SONGS WITH STIG ANDERSON

BOOK BY **CATHERINE JOHNSON**

ORIGINALLY CONCEIVED BY **JUDY CRAYMER**

MAMMA MIA! WAS ORIGINALLY PRODUCED IN LONDON
BY JUDY CRAYMER, RICHARD EAST AND BJÖRN ULVAEUS
FOR LITTLESTAR IN ASSOCIATION WITH UNIVERSAL.

ADDITIONAL MATERIAL
& ARRANGEMENTS

MARTIN KOCH

MUSIC PUBLISHED BY UNIVERSAL MUSIC PUBLISHING GROUP AND
EMI GROVE PARK MUSIC INC. AND EMI WATERFORD MUSIC INC.

For Bremerton Community Theatre

Director

TRINA WILLIAMSON

Choreographer

STEPHANIE CLARKE

Music & Vocal Director

BRYCE McGUIRE

Lighting & Sound Designer

KEVIN MATTHEW

Scenic Designer

RANA TERESA TAN

Costume Designer

KRISTIN BRADBERRY

Stage Manager

TA'MARA BALE



The videotaping and/or other video or audio recording of this production is *strictly* prohibited.

MAMMA MIA! is presented through special arrangement with Music Theatre International (MTI).
All authorized performance materials are also supplied by MTI.

www.mtishows.com

Please turn off your cell phones before the show. Assisted Listening Devices are available at the Box Office.
Accessible seating for patrons with mobility requirements is available in row L.

The CAST

(in order of appearance)

Sophie Sheridan	Shelby Skinner
Ali	Shannon Leigh
Lisa	Megan Whitemarsh
Tanya	Danielle Aldana Priest
Rosie	Elizabeth Dangelo
Donna Sheridan	Nicole Bird
Sky	Jesse Ellis
Pepper	Will Ardoin
Eddie	Zac Logdahl
Harry Bright	Isaak Hammers
Bill Austin	Gary Fetterplace
Sam Carmichael	Adrian DeGroot
Father Alexandrios	Corey Suraci

The ENSEMBLE

Sydney Barney, Stephen Dearborn, Becky Eastgard, Staci Ellis,
Ceilidh “Spud” Fischer, Jane Frandsen, Hanna Hoskins,
Charis Ifland, Emily Kasper, Amaya Vincent

UNDERSTUDIES

for Pepper—Corey Suraci
for Father Alexandrios—Stephen Dearborn

The BAND

Conductor/Keyboard—Bryce McGuire, *2nd Keyboard*—Kevin Matthew
Guitars—Mark Jackson, *Bass*—Liz Cotugno
Drums—Art Whitson

Lighting Advisory: This production uses a disco ball and LED lighting effects that create moving reflections and flashes of light throughout the theatre. These effects may be uncomfortable for individuals sensitive to bright or shifting light patterns. Viewer discretion is advised.

On a Greek Island, a wedding is about to take place...

PROLOGUE

Three months before the wedding

I Have a Dream Sophie

ACT ONE

The day before the wedding

Honey, Honey Sophie, Ali, Lisa

Money, Money, Money Donna & Ensemble

Thank You for the Music Harry, Bill, Sam, Sophie

Mamma Mia Donna, Harry, Bill, Sam & Ensemble

Chiquitita Rosie, Tanya, Donna

Dancing Queen Rosie, Tanya, Donna

Lay all Your Love on Me Sky, Sophie, Pepper, Eddie & Friends

Super Trouper Donna, Tanya, Rosie & Women

Gimme!, Gimme!, Gimme! Lisa, Ali, Sophie, Sam,
Bill, Harry & Women

The Name of the Game Sophie & Bill

Voulez Vous Ensemble

... and then there was a 15-Minute Intermission

ACT TWO

The day of the wedding

Under Attack Sophie & Nightmare Chorus

One of Us Donna

S.O.S. Sam & Donna

Does Your Mother Know? Tanya, Pepper, Harry,
Rosie, Lisa, Ali, Bill

Knowing Me, Knowing You Sam

Our Last Summer Donna & Harry

Slipping Through my Fingers Donna & Sophie

The Winner Takes it All Donna

Take a Chance on Me Rosie & Bill

I Do, I Do, I Do Sam, Rosie, Tanya, Donna & Ensemble

I Have a Dream Sophie & Ensemble

Director's Note

Do you remember the first time you heard “Dancing Queen,” “Mamma Mia,” or “Take a Chance on Me” by ABBA? This is some of the most iconic music of the 1970s and is as popular today as it was 50 years ago! With the book written by Catherine Johnson and music by Björn Ulvaeus and Benny Andersson, it tells the story of Donna Sheridan, a former girl group pop singer raising her daughter Sophie, trying to run a small hotel on a Greek island. While it sounds idyllic, there’re all kinds of turmoil and drama added to the mix of the music that we love so much. I think you’ll be surprised at how easily each of the songs fits into the show. The lyrics work beautifully, telling the story of Sophie and Donna’s relationship! The dancing and singing, lights, set, costumes and the band are a feast for the senses. You’ll be tapping your feet and will want to jump up and sing along! That being said, we invite you to dance and sing with us at the end of the show during the bows! I hope you enjoy our production!

– *Trina Williamson*

Special thanks to Bainbridge Performing Arts for their costuming assistance and to David Baine for the loan of the bagpipes!

PRODUCTION STAFF

Director	Trina Williamson
Music & Vocal Director	Bryce McGuire
Choreographer	Stephanie Clarke
Assistant Choreographer	Emma Turnquist
Set Design	Rana Teresa Tan
Lighting Design	Kevin Matthew
Costume Design	Kristin Bradberry
Stage Manager	Ta’Mara Bale
Production Assistant	Palmer Scheutzow
Sound	Kevin Matthew, David Whitmarsh
Intimacy Coach	Annika Nelson
Set Builders	Eric Spencer, Rana Teresa Tan

MADE POSSIBLE BY VOLUNTEERS

As you enjoy *Mamma Mia!* today, we'd like to share something many audience members never see: every moment on this stage is made possible by volunteers. Bremerton Community Theatre has been a volunteer-powered organization since 1942, and each production depends on the time, talent, and heart of neighbors who choose to keep live theatre thriving in our community.

Behind Every Show

A typical production involves **30–50 volunteers**, including set builders, painters, costumers, dressers, props artisans, stage crew, technicians, and many others. These teams work for weeks to create the world you see under the lights.

Front of House

Each performance relies on **6–12 volunteers** who welcome patrons, assist with seating, staff the box office, provide hospitality, and serve at the bar. They are the first friendly faces you meet when you walk through our doors.

Board of Trustees

BCT is guided by a volunteer **Board of Trustees** who oversee finances, facilities, fundraising, community partnerships, and long-term planning. Their stewardship keeps the theatre strong for future generations.

We share this because we want our community to know the truth: **BCT exists because everyday people choose to make it exist.** If you feel inspired to join the family—onstage, backstage, or front of house—we would love to welcome you. No experience is required; just bring your enthusiasm and a willingness to learn.

Thank you for supporting local theatre, and thank you for being part of the community that keeps BCT shining.



BJÖRN ULVAEUS (*Music & Lyrics*) pictured above left, was born in Gothenburg in 1945 and began his career with the folk group the Hootenanny Singers, one of Sweden's most popular acts of the 1960s. His longtime collaboration with Benny Andersson began in 1966, eventually leading to the formation of ABBA, with whom he worked throughout the 1970s and early '80s. Ulvaeus and Andersson went on to compose the musicals *Chess* (with Tim Rice) and *Help Wanted*, and Ulvaeus has continued writing lyrics for the Benny Andersson Orchestra. He has also contributed to the stage and film productions of *Mamma Mia!*

BENNY ANDERSSON (*Music & Lyrics*) pictured above right, rose to fame as a member of The Hep Stars, Sweden's top rock band of the 1960s, where he began composing hits such as "Sunny Girl" and "Wedding." He later became a founding member of ABBA and, with Björn Ulvaeus and Tim Rice, co-composed the musical *Chess*. Andersson has also explored Swedish folk traditions through his collaborations with Orsa Spelmän and the formation of the Benny Andersson Orchestra, featuring vocalists Helen Sjöholm and Tommy Körberg. He is married to Mona Nörklit and has three children—Peter, Helene, and Ludvig—and five grandchildren.



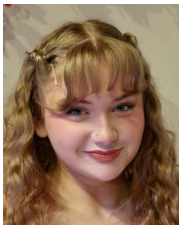
STIG ANDERSON (*Additional Songs*) gained international recognition as ABBA’s manager, but was first known in Sweden for his witty, chart- topping songs, including “The Girls Who Know Are Found in the Country” and “Rockin’ Billy.” He played a pivotal role in bringing Björn Ulvaeus and Benny Andersson together as a songwriting team and later made them partners in Polar

Music. Anderson championed ABBA’s bid for Eurovision—suggesting the title “Waterloo”—and helped guide the group to global success. Throughout their collaboration, he continued contributing lyrics to the Andersson/Ulvaeus partnership while overseeing one of Sweden’s most successful entertainment enterprises.

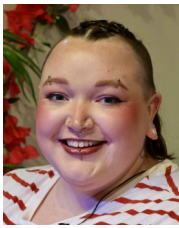


CATHERINE JOHNSON (*Book*) has written extensively for theatre, including *Rag Doll*, *Renegades*, *Suspension*, *Too Much Too Young*, *Boys Mean Business*, *Dead Sheep*, *Little Baby Nothing*, *Shang-a-Lang*, and the global hit *Mamma Mia!*. She has also contributed to NT Connections and served as creative consultant for ABBA The Museum in Stockholm. Her television work

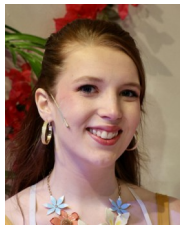
includes *Casualty*, *Byker Grove*, *Love Hurts*, *Gold*, and *Linda Green*, along with original screenplays for HTV, the BBC, and Channel 4. Johnson received multiple awards for her playwriting and earned a Tony nomination for the book of *Mamma Mia!* in 2002. She also wrote the screenplay for the 2008 film adaptation.



Shelby
Skinner



Shannon
Leigh



Megan
Whitmarsh



Danielle
Aldana Priest



Elizabeth
Dangelo



Nicole
Bird



Jesse
Ellis



Will
Ardoin



Zac
Logdahl



Isaac
Hammers



Gary
Fetterplace



Adrian
DeGroot



Corey
Suraci



Sydney
Barney



Stephen
Dearborn



Becky
Eastgard



Staci
Ellis



Ceilidh "Spud"
Fischer



Jane
Frandsen



Hanna
Hoskins



Charis
Ifland



Emily
Kasper



Amaya
Vincent

Biographies

SHELBY SKINNER, she/her (*Sophie Sheridan*) feels so blessed to be playing the role of Sophie, a role she has dreamt of since the age of 8. Her recent credits include Alice in her school's production of *Alice by Heart*, the role of Wednesday in *The Addams Family* (Jewel Box Theater) for which she was also choreographer, and Dorothy in *The Wizard of Oz* (Admiral Theater). When not on stage, Shelby is a student and Young Ambassador of Seattle Theater Group! She thanks her family and friends for always supporting her and her crazy schedule. Enjoy the show!

SHANNON LEIGH, they/them (*Ali*) is thrilled to be a part of their first BCT show! You may have seen Shannon in Encore!'s productions of *Grease* as Rizzo or *Guys & Dolls* as Nicely Nicely Johnson. In their free time Shannon teaches acting and vocal lessons to Kitsap's youth. Shannon wants to give a shout out to her friends, family, and dog, Georgia Mae, for all the support they give! Enjoy the show!

MEGAN WHITEMARSH (*Lisa*) has had a blast playing best friends with some of her best friends in this show! In the past year, you may have seen her in the ensembles of *Guys and Dolls* with Encore! and *The Hunchback of Notre Dame* with BPA. She thanks her family, friends, cats, and boyfriend for their support. Enjoy the show!

DANIELLE ALDANA PRIEST, she/her (*Tanya*) is thrilled to be a member of this phenomenal cast! Her very favorite role EVER is as mom to Cooper, who has encouraged her return to the stage after a fifteen year hiatus! She shared the stage with him, covering for an ill cast member as Crying Bride in *The Addams Family* at Jewel Box Theatre, and as a member of the ensemble for *Annie* with Kitsap Forest Theater. In real life, Dani loves teaching at OC and owns a consulting firm. Thanks to my biggest fan, my mama. All my heart to my Jimmy for supporting me in all the things—FOREVER.

ELIZABETH DANGELO (*Rosie*) is happy to be back treading the boards at BCT! As an avid ABBA fan she can't wait to be a Dancing Queen—even though she is *ahem* not 17. Favorite past roles include Fiona in *Shrek the Musical*, Miss Shields in *A Christmas Story*, Lois in *Kiss Me Kate*, and Ocean in *Ride the Cyclone*. Cheers!

NICOLE BIRD (*Donna Sheridan*) is thrilled to play this dream role in a dream show! She was most recently on stage in *The Spitfire Grill* as Percy at the Jewel Box Theatre. Her last musical at BCT was *Beauty and the Beast*, wherein she played Belle. When not singing, she loves reading and spending time with her family. She is so grateful for this amazing cast and crew! And much love and thanks to her husband and kids!

JESSE ELLIS (*Sky*) is excited to perform with Bremerton Community Theatre for the first time. Most recently, you may have seen him perform at Enoch City Arts as Jason in *Ordinary Days*. This past summer, you may also have seen him in Kitsap Forest Theater's amazing musical production of *A Midsummer Night's Dream*, where he played Demetrius. He has a passion for music, which is now expressed through a medium he just discovered and now loves: musical theater! He wants to specifically thank his daughter Mila for convincing him to do theater with her a year ago. Another huge thanks goes out to his very supportive wife Brienn, and his youngest daughter, Juno. Enjoy the show!

WILL ARDOIN (*Pepper*) is making his debut at BCT, having last been seen at Enoch City Arts in *Ordinary Days*. His performance in *Mamma Mia!* is his third in a musical.

ZAC LOGDAHL (*Eddie*) is excited to be in their first show at Bremerton Community Theatre! Their most recent roles were in the Encore! productions of *Guys and Dolls* as Nathan Detroit and in *Grease* as Teen Angel. They want to thank their friends and family for their support and encouragement! Hope you enjoy the show!

ISAAK HAMMERS (*Harry Bright*) considers BCT a home away from home! Favorite shows include *Jesus Christ Superstar*, *Rocky Horror Picture Show*,

The Nutcracker, *Into the Woods*, and *Evita*. Offstage, Isaak is a family man, realtor, photographer, and dance fitness instructor. Thanks for supporting local theater!

GARY FETTERPLACE (*Bill Austin*) joined BCT in 2004 and became a board member in 2009. This is his 36th show at the theatre, with the majority being performances, but more recently set design and building has become more prevalent, with "Best Set" recognition in 2016 for his work on *Romeo & Juliet*. When Gary is not at the theatre, he runs his construction company and home inspection businesses.

ADRIAN DEGROOT, he/him (*Sam Carmichael*) is delighted to be in another musical! His last was *Titanic*, and he's also been in many other shows, most recently Agatha Christie's *Spider's Web*. When not at BCT, Adrian enjoys spending time with family, especially when it involves board games!

COREY SURACI (*Father Alexandrios*) is grunted to be returning to the BCT stage with this fabulous cast and crew. You may have seen him recently in *Gutenberg! The Musical!*, *The Play That Goes Wrong*, *The Hunchback of Notre Dame*, and *Annie*. You may have seen him many years ago in *Into the Woods*, *Shrek the Musical*, and *Footloose*. You probably didn't see him in *Hadestown*, *Beetlejuice*, and *Aladdin*, as he has not been in those shows.

SYDNEY BARNEY (*Ensemble*) is excited to be in the ensemble of *Mamma Mia!* This is her first production with BCT, and she has loved the experience. She previously performed as Donkey in *Shrek the Musical*, Fairy Godmother in *Cinderella*, Ms. Hannigan in *Annie*, Beast in *Beauty and the Beast*, and Peter Pan in *Peter Pan*. Sydney has performed since she was little and enjoys singing, dancing, and playing in the orchestra. She loves spending time with her friends and family and thanks her director, musical director, and choreographers, with special thanks to her mom for supporting her and always being there.

STEPHEN DEARBORN, he/him (*Ensemble*) is a member of the ensemble in *Mamma Mia!*. Most recent credits include *A Christmas Carol* with Enoch City Arts, *Spider's Web* and *Titanic* with Bremerton Community Theatre, and many, many more. Outside of theater, Stephen enjoys traveling and recently had the opportunity to visit Iceland with his brother. He is deeply grateful for the unwavering support of his family, without whom this work would not be possible.

BECKY EASTGARD (*Ensemble*) is overjoyed to be in this musical! She was last seen at BCT as Maggie Smith in *Suspect*, and as Madame Arcati in *Blithe Spirit*. Favorite roles include the former, as well as Ethyl Thayer in Port Gamble Theater's *On Golden Pond* and Clairee in *Steel Magnolias*. If all

the world's a stage, she just finds one with curtains and chairs! Thanks to Trina, Bryce, Stephanie, and Ta'Mara. Thanks, too, to Tom, and to you, our valued ticket holders. There's no show without you!

STACI ELLIS (*Ensemble*) is excited to be in her first production at Bremerton Community Theatre! I love the enthusiasm and energy of the cast and staff! Her previous theater experiences include Adelaide in *Guys & Dolls*, Ado Annie Carnes in *Oklahoma!*, Sister Robert Anne in *Nunsense*, and in ensembles of many other productions in the Tacoma area! I'm grateful for my husband, son, friends, and church family that cheer me on and for God's grace and strength to return to theater after the death of my daughter, Sophia in 2025.

CEILIDH "SPUD" FISCHER (*Ensemble*) is thrilled to be working with Bremerton Community Theatre in *Mamma Mia!*. She discovered her vocal talents through a stylized interpretation and performance of Ozzy Osbourne's "Crazy Train" at West Sound Academy. In the years that followed, her performances included folk, jazz, contemporary pop, and classical music with vocal coach Ila Faubion. She graduated high school through Olympic College, and in her spare time she enjoys bedazzling items and constructing outfits. She wants to thank all her loved ones who have supported her over the years.

JANE FRANSDEN (*Ensemble*) is 17 years old and a junior in high school. She has performed in around 20 musicals so far, and is excited to perform in her first all-adult show. Jane's favorite roles include Regina George in *Mean Girls* and Liesl in *The Sound of Music*. Jane's other interests include varsity competitive and sideline cheerleading, visual arts, traveling, shopping, and reading. She is very excited about this wonderful opportunity to perform in a new type of environment and truly hopes that everyone in the audience will have a blast and be able to have a fun time watching this amazing show!

HANNA HOSKINS (*Ensemble*) is excited to return to the stage after a seven-year break from performing. Some of her favorite past productions include *The Music Man*, *Oklahoma!*, and *Anne of Green Gables*. When she's not rehearsing, Hanna enjoys skiing, getting lost in a good book, and spending time with her friends and family.

CHARIS IFLAND (*Ensemble*) is thrilled to be making her first appearance at Bremerton Community Theatre, while dancing and singing with this talented and creative cast. She has enjoyed being a part of productions with Port Gamble Theater, Jewel Box Theatre,

and Ovation! Performing Arts NW. When she isn't sharing the stage, she teaches voice, cello, and piano lessons from her studios in Poulsbo and on Bainbridge Island. She extends heartfelt thanks to CJ for his endless support and encouragement, and hopes you enjoy the show!

EMILY KASPER (*Ensemble*) is living her childhood dream as a dancing queen in *Mamma Mia!*. Recent credits include Hermia in *A Midsummer Night's Dream* (Kitsap Forest Theater) and in the ensemble in *Jesus Christ Superstar* (Bremerton Community Theatre). You can catch her performing with her band Peony Princess around Kitsap and Seattle. Much love to Peter and Kiki! @peonyprincessband

AMAYA VINCENT (*Ensemble*) is thrilled to be back on the Bremerton Community Theatre stage in *Mamma Mia!*. This marks her second performance with BCT, after appearing in last season's *Jesus Christ Superstar*. In addition to performing, Amaya has loved working behind the scenes as stage manager for some BCTjr productions. She would like to thank her friends and family for their constant love and support and hopes you enjoy the show!

BRYCE MCGUIRE (*Music & Vocal Director, Conductor/Piano*) is excited to cross *Mamma Mia!* off his bucket list and play with this amazing band. With more than 25 years of piano experience and a fondness for classic rock, today he is truly in his element.

KEVIN MATTHEW (*Lighting & Sound Design, 2nd Keyboard*) dedicates his performance tonight to his Mom. She was a church organist for 75 years and made sure I was raised with music, piano, and voice lessons, and made sure I knew how to play the pipe organ. Miss you.

MARK JACKSON (*Guitars*) has performed onstage in many theatre productions, including *Ring of Fire*, *A View from the Bridge*, and *One Man, Two Guvnors* here at BCT. He frequently plays drums and guitar in musicals throughout the area. An "IT" guy by day, Mark enjoys songwriting as well as teaching and providing lessons for guitar, bass, and drums, and spending time with his lovely wife and their 4-legged kids!

LIZ ARCHULETA COTUGNO (*Bass*) has been playing bass for many years. Her previous theatre productions include *Mamma Mia!* at Bainbridge Performing Arts and *A Charlie Brown Christmas* at Port Gamble Theatre. Liz also plays electric bass for the local country rock artist Joel Gibson Jr. with whom she has traveled extensively, playing gigs all over the Pacific Northwest. Musical theatre will always be dear to her heart, as she

loves the challenge and playing with a variety of musicians.

ART WHITSON (*Drums*) has played in the pit or onstage band for several musicals with local theaters, including BCT's *Mary Poppins* and *Ring of Fire* and JBT's *Honky Tonk Laundry*. He also plays in other area musical theater pits, rock/jazz bands, and with the Bainbridge, Poulsbo, and Bremerton Symphony Orchestras.

STEPHANIE CLARKE (*Choreographer*) is a co-owner and instructor at the Northwest School of Dance and Director of the studio's competition dance team, Clarke Dance Group. She has been teaching and choreographing dance for over 20 years and has choreographed many musicals at BCT including *Fiddler on the Roof*, *Something Rotten!* and *Mary Poppins*.

TRINA WILLIAMSON (*Director*) started at BCT in 1981 in the chorus of *Fiddler on the Roof*. She stepped into directing in 1993 (music *and* acting) and has directed and/or music directed more than 50 productions since then. Directing credits include: *The DaVinci Code*, *Annie*, *The Sound of Music*, *Mary Poppins*, *Nunsense*, *Legally Blonde*, *Little Shop of Horrors*, *Death of a Salesman*, and *Blithe Spirit*. Thanks to the hard-working staff, crew, and cast for making this show come to life! And as always, thank you to her supportive husband Mark (playing guitar in the band!) for letting her indulge in her theatre habit!!!

And Coming Soon...

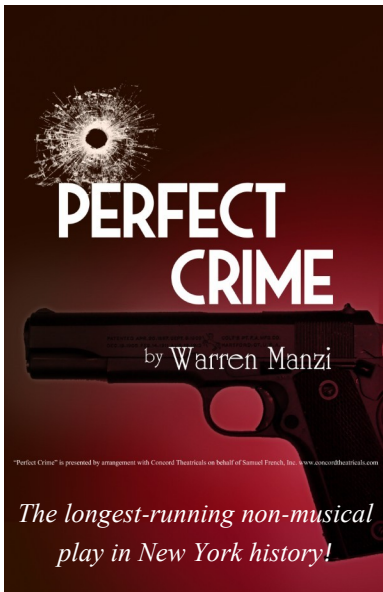
A quartet of spirited retirees decides it's never too late to stir up trouble – and their outrageous new “business venture” sends their quiet lives into comedic chaos. *Old Ringers* is a warm, witty celebration of friendship, reinvention, and the joy of breaking the rules.

GET YOUR TICKETS TODAY!

MAY 15-24

in the

Robert B. Stewart Performance Hall



A murder. A suspect who's too smart for her own good. A detective who won't back down. *Perfect Crime* delivers mind games, misdirection, and a finale you won't see coming!

GET YOUR TICKETS TODAY!

JUNE 5-28

in the

Robert Montgomery Auditorium



82 YEARS OF DRAMA, 50 YEARS UNDER ONE ROOF

Bremerton Community Theatre first took the stage in 1944, born from a simple idea: give the thousands of wartime workers pouring into Bremerton a place to gather, create, and feel a little more at home. The city had exploded from 15,000 residents to more than 75,000 almost overnight, and the federal government funded recreation programs to help keep spirits high. One of those programs sparked a tiny amateur drama group that would become BCT.

Our first productions were staged in a small building packed with passionate volunteers—actors, builders, costumers, and dreamers—who managed to produce an impressive 123 shows before we moved to our current home on Lebo Boulevard in 1976.

That move was a true community effort. Theatre members installed equipment themselves, while shipfitters, welders, and mechanics from the Puget Sound Naval Shipyard helped hoist in a vintage rigging system donated by the old Seattle Orpheum Theatre. Even our seats came with a story—they were rescued from Seattle's Music Hall and given a second life here.

From the beginning, BCT has been powered entirely by volunteers and fueled by a shared love of live performance. Today, as we celebrate our 50th year in our "new" theatre and our 82nd season of storytelling, we honor everyone who built this place—literally and figuratively.

We're glad you're here. Enjoy the show!

Bremerton COMMUNITY THEATRE

Agatha Christie's **BLACK COFFEE**

AUG 28-SEPT 20

Based on Sholem Aleichem stories by special permission of Arnold Perl

Book
JOSEPH STEIN

Music
JERRY BOCK

Lyrics
SHELDON HARNICK

Original New York Stage Production Directed and Choreographed
by **JEROME ROBBINS**

Fiddler *on the* Roof

OCT 30-NOV 22



THE **CLOCKMAKER'S DAUGHTER**

FEB 5-28

AN ORIGINAL MUSICAL FAERYTALE
BY **MICHAEL WEBBORN & DANIEL FINN**

REST

by **Samuel D. Hunter**

APR 2-18, 2027



NIGHT SKY

by **Susan Yankowitz**

JUNE 4-20, 2027

TICKETING & REFUND POLICY

At Bremerton Community Theatre, every ticket helps us bring stories to life. As a small non-profit with limited seating and fixed production costs, we follow these policies to ensure fairness and sustainability.

All Sales Are Final

Standard tickets are non-refundable. Once a purchase is completed, we cannot issue cash or credit card refunds for any reason, including schedule conflicts or personal emergencies.

Exchange & Alternative Options

We know plans can change, so we offer flexible alternatives:

Performance Swaps

You may exchange your tickets for another performance of the *same* production if the request is made **at least 24 hours** before your original curtain time. Exchanges are complimentary.

Gift Certificate Conversion

If you can't attend any remaining dates, we can convert your ticket value into a Gift Certificate for future productions.

- Must be requested **24+ hours** before your scheduled show
- Ticketing fees are not included in the certificate

Ticket Donation

If you're unable to use or exchange your tickets, you may donate them back to the theatre. Notify us before showtime, and we'll provide a receipt acknowledging the ticket price as a tax-deductible contribution.

Cancellations & Late Arrivals

Theatre-Initiated Cancellations

If we must cancel a performance (weather, power outage, illness), we will contact patrons with options for an exchange, account credit, or full refund.

Late Seating

To preserve the experience for performers and audience members, late seating is at the discretion of the House Manager. Missed performances due to late arrival are not eligible for refunds or exchanges.

BCT BOARD OF DIRECTORS

OFFICERS

PRESIDENT DONNA MOZINGO
VICE PRESIDENT DAN ENGELHARD
SECRETARY WALLACE ROSS
TREASURER GARY FETTERPLACE

GOVERNING MEMBERS

PRODUCTION COORDINATOR RANA TAN
AT LARGE (VOLUNTEER COORDINATOR) TA'MARA BALE
AT LARGE (FRONT OF HOUSE COORDINATOR) MJ JORDAN
AT LARGE (COSTUMES & PROPERTIES) KRISTI ANN JACOBSON
AT LARGE (FACILITIES & GROUNDS) ERIC SPENCER
AT LARGE (TECHNICAL DIRECTOR) KEVIN MATTHEW

BCT VOLUNTEER STAFF

BUSINESS MANAGER MJ Jordan
BOX OFFICE MANAGER Andy Jordan
BOX OFFICE STAFF Dave Payne, Teresa Haigh-Braget, Catherine Bennett,
Jen DeGroot, Ta'Mara Bale, MJ Jordan, Andy Jordan
SHOWTIME HOUSE MANAGERS Barbara Miller, Kelvin Jones, Donna Mozingo,
Wallace Ross, Dan Engelhard, Gary Fetterplace, Kevin Matthew, Dale Borer,
Jeffrey Bassett, Ta'Mara Bale, MJ Jordan
HOSPITALITY Patty Swan, Beverly Carlson, Dale Borer,
Kim Carpenter, Kristin Guy, Selah Guy, Linda Jensen, Andy & MJ Jordan,
Stephanie Mikos, Eric Spencer, Scott & Christine Usher
BAR MANAGER Andy Jordan
BARTENDERS Ta'Mara Bale, Jeffrey Bassett, Catherine Bennett,
Adrian DeGroot, Gary Fetterplace, Travis Johnson, Kelvin Jones,
Andy Jordan, Stephanie Mikos, Ted Schroeder, DeeAnn Simpson
THEATRE RENTAL Rana Tan
GRAPHIC DESIGN/WEBMASTER Andy Jordan

SureLook Homes, Inc.

Inspecting Homes Throughout The Kitsap Peninsula, Washington & Beyond

- 7 Days a Week
- Photographic Narrative Reports
- Digitalized Online
- New Construction Specialty



Home Inspection Services
www.surelook-homes.com

Evergreen Trophies and Engraving LLC



1000 6th Street, Suite 120
Bremerton, WA 98337
360-373-6689



Trophies, plaques, commemorative items, sports awards, memorials, school fundraisers, *and more!*

Because success deserves more than a handshake.

ORDERS@EVERGREENTROPHIES.COM

EVERGREENTROPHIES.COM